



Products and
Services

Case Study The Liberty Stadium Swansea

Architect: TTH Architects

Contractor: Interserve

Cladding contractor: Allmass

System manufacturer:

Corus Panels & Profiles, and
Eurobond

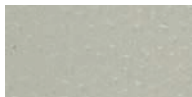
System type: Composite

Profile reference:

Trisomet® (Corus Panels & Profiles),
Europanel Extra (Eurobond)

Colorcoat® product:

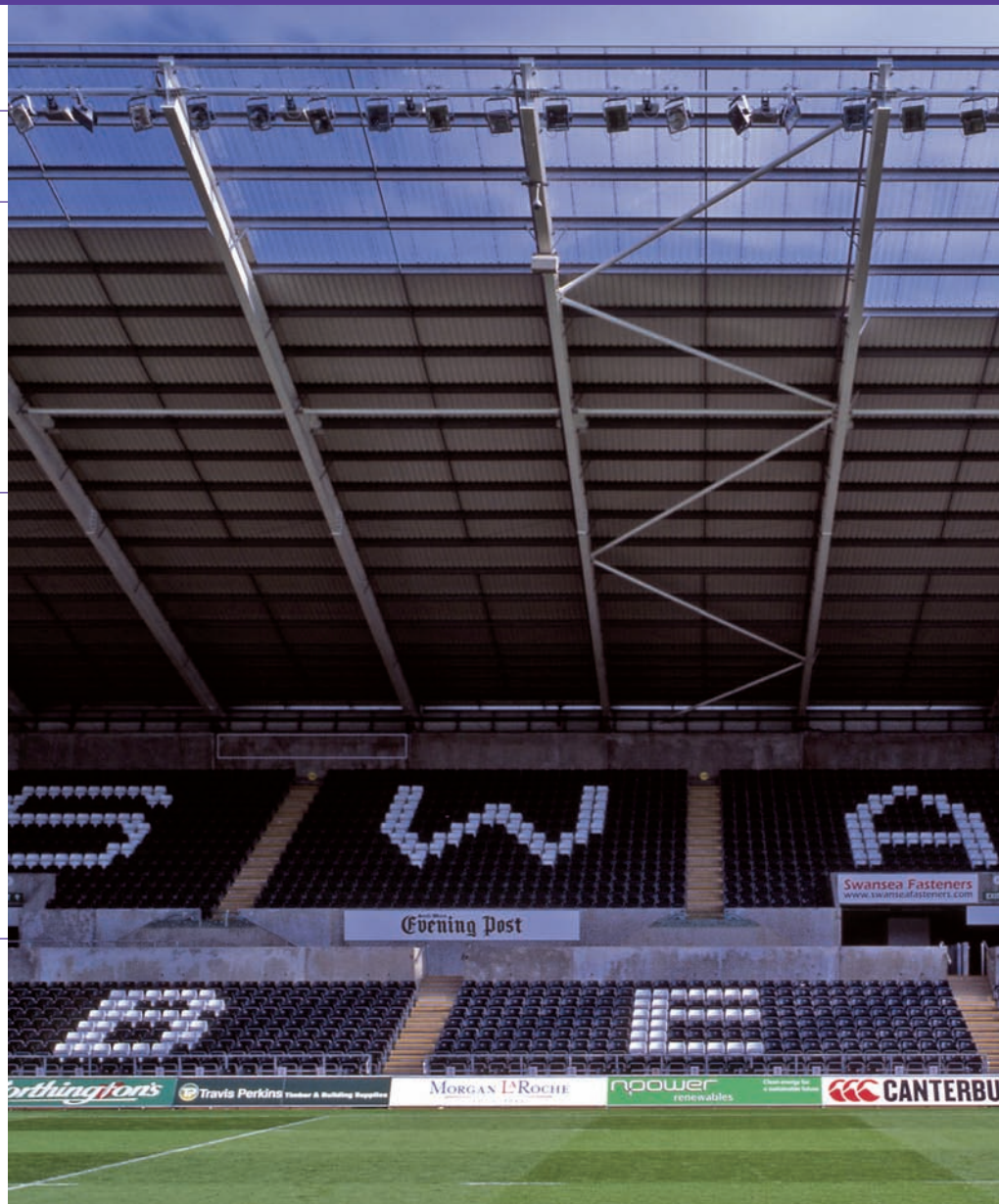
HPS200® (roof and walls)



Goosewing Grey



Hamlet



Swansea Stadium Sporting Success

The new Liberty Stadium, Swansea, was developed to create a first class sporting venue for football and rugby in the region, catapulting the city into the premier league of sporting facilities. The stadium is the new home of Swansea City Football Club and the Ospreys (Neath and Swansea) rugby team. The building is managed by a tri-partite conglomerate, comprising representatives from the football and rugby clubs along

with Swansea Council. TTH Architects were commissioned to create a stadium that would reflect the region's passionate love of sport, ready for opening for the 2005-2006 sporting season. With a history of experience in building stadia, the architectural practice designed a state of the art structure, located in the heart of Swansea.

The Liberty Stadium Swansea

The building has been designed with top class facilities, including 20,000 seats, 29 Executive Boxes, hospitality and function Suites as well as office accommodation and the capacity to accommodate commercial exhibitions and wedding receptions. The pitch has been designed to stage at least 60 games per season. Four tunnels at each corner enable a consistent flow of air throughout the stadium.

The specification of pre-finished steel as a cladding material was important to the design of the building. The architects wanted a material with the flexibility to adapt to the unusual design, which could mould itself to the bowl shaped stadium contours. The material had to provide high performance and durability but also accommodate a distinct colour strategy. Pre-finished steel cladding was the ideal option and the critical colour scheme was accommodated through the use of Colorcoat HPS200® for both the roof and walls. “The colour scheme was a very important consideration, with both ourselves and the planning department involved in the specification”, comments Terry Crozier from TTH Architects. “The completed stadium has the desired presence thanks to the coordinated colours of the roof structure and the colour wall panels”.

Corus Panels and Profiles supplied the panels for the roof to the main stadium in *Colorcoat HPS200* Goosewing Grey and Hamlet. The Trisomet® panels used are equally suited for roof or wall assembly and used *Colorcoat HPS200* on the internal and external sheets for all areas exposed to the elements. The Trisomet panel’s interlocking liner provides greater resistance to loading and therefore allows the product to span further distances, making it the ideal choice for this project. Eurobond supplied the wall panels in *Colorcoat HPS200*, Hamlet.

Roofing contractors, Allmass Cladding Systems were responsible for the design and installation of the cladding to the roof and, according to Ray Massey, *Colorcoat HPS200* was the obvious choice. “We liaised closely with all involved parties including Corus Colors and Corus Panels & Profiles, to ensure the best cladding solution for such a prestigious building,” he comments. The inclusion of the market leading Corus Confidex® Guarantee with *Colorcoat HPS200* was also a major benefit for the building owners, providing peace of mind for up to 25 years.

